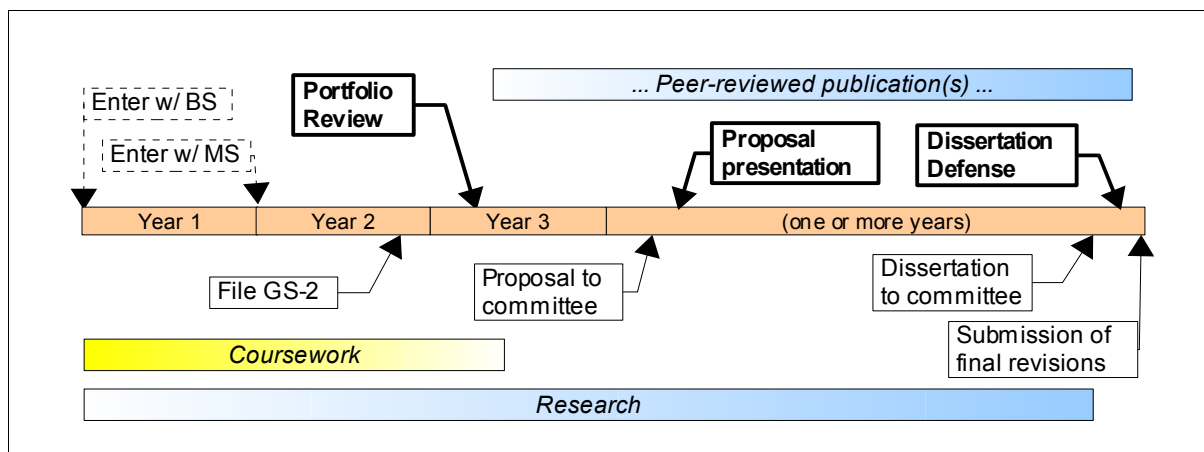


School of Computing PhD Timeline for students entering in Fall 2011

General Flow



Details

Milestone	Description	Timing
Introduction to Research	You should enroll in the Introduction to Faculty Research Seminar in fall (950 section 9 for 1 credit hour) and arrange a Research Experience in spring (3 credit hours of 950 or 888).	First year FALL 2011
File GS2 via School Form GF-2	The student will find an advisor and then establish an Advisory Committee by filing a GF-2. This will allow a plan of study form (GS2) to be prepared, which will include, in addition to the required 950/888 hours listed above: 12 hours of coursework beyond the MS, 6 hours of 950, and 18 hours of 991. (These courses do not have to be completed before the portfolio review.)	DUE BY SPRING 2013
Portfolio Review	The portfolio is our version of the PhD Comprehensive Exam. The portfolio documents core competency areas and includes a research paper of publishable quality (although it does not have to be published at the time of the review). The portfolio is reviewed by the Graduate Affairs Committee (GAC). The student has at most two chances to pass the exam by having a submitted portfolio approved. <i>Portfolio approval starts the Grad School's 5-year time limit</i>	Entering with BS: by 6th semester DUE BY SPRING 2014 Entering with MS: by 4th semester DUE BY SPRING 2013
Written Proposal	The student will provide a written Dissertation Proposal to his or her Advisory Committee. The proposal documents a literature review and provides a statement of the problem to be addressed in the dissertation. The proposal is reviewed by the student's Advisory Committee.	Two weeks before the proposal presentation
Proposal Presentation	A public presentation of the Dissertation Proposal is required.	At least 6 months prior to dissertation defense (but likely one to two years prior)

Publication	A paper accepted in a peer-reviewed conference or journal is required of each PhD student. The paper may be co-authored.	Before graduation
Diploma Order	Early in the last semester the student informs the Graduate School of his or her intent to graduate (via SISweb).	See the Graduate School deadline for that semester
Dissertation	The student will provide a written dissertation to his or her Advisory Committee. The dissertation addresses a significant open question or problem in computing. Describes the current state of knowledge, and presents an original solution or contribution. The dissertation is reviewed by the student's Advisory Committee.	Two weeks before the dissertation defense
Dissertation Defense	A public defense of the dissertation is required.	At least two weeks prior to the GS7 filing deadline for the student's final semester
Format Approval	The student will submit the completed dissertation for format approval from the Graduate School Manuscript Review Office. The only revisions the student may make after this submission are formatting revisions requested by the Manuscript Review Office.	See the Graduate School deadline for that semester
Final Submission	All revisions requested by the Manuscript Review Office must be completed and approved by the Manuscript Review Office. <i>Must be completed within a 5-year time limit from the date of the portfolio approval</i>	See the Graduate School deadline for that semester

Notes:

- School of Computing deadlines are earlier and take precedence over Graduate School deadlines. That is, you cannot delay past a School deadline until the Graduate School deadline and expect the School to have the time to process paperwork and still meet the Graduate School deadline.
- PhD students who enroll without a MS degree in computing must complete 30 hours of graduate computing coursework including the 12 credits identified on the GS2. Graduate coursework in computing taken prior to enrollment at Clemson can be counted toward this requirement with the approval of the Director of Graduate Affairs (DGA). Based on university rules, a direct-entry student must have a program of study documenting a minimum of 60 credit hours total beyond the Bachelors degree.
- The required 12 credit hours of course work beyond the MS degree may be satisfied by taking four 800-level courses (exclusive of 881, 888, 95x, 981, and 991). However, one CPSC 881 course or one 3-hour 800-level course from outside the School of Computing may be included in the 12 credit hours with the approval of both the research advisor and the DGA.

See also:

PhD program - http://www.clemson.edu/ces/departments/computing/current/curr_grad/phd/index.html

Clemson Graduate School Deadlines - <http://www.grad.clemson.edu/Deadlines.php>